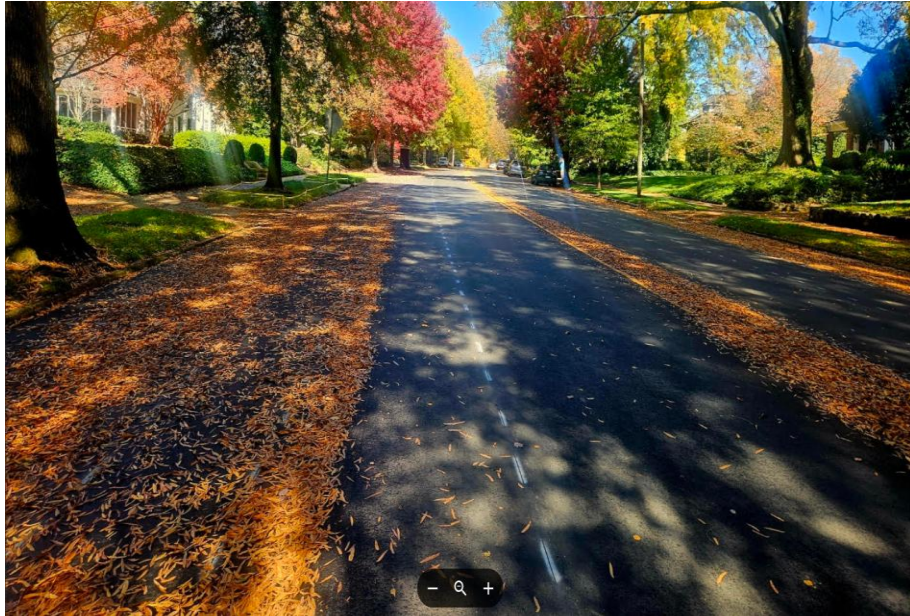


Wondering what those lines are on Dilworth Rd?



Those are “pre-lines” for a traffic calming project that CDOT is rolling out on Dilworth Rd. The striping contractor should be on site this Saturday 11/15 to install the pavement markings for the new bike lanes and parallel parking.

A separate crew will handle the installation of ADA curb ramps at Mt. Vernon Avenue and Covenant Presbyterian Church, as well as two ADA-accessible parking spaces along Dilworth Rd. This crew is currently wrapping up work on another project and is expected to begin within the next couple of weeks.

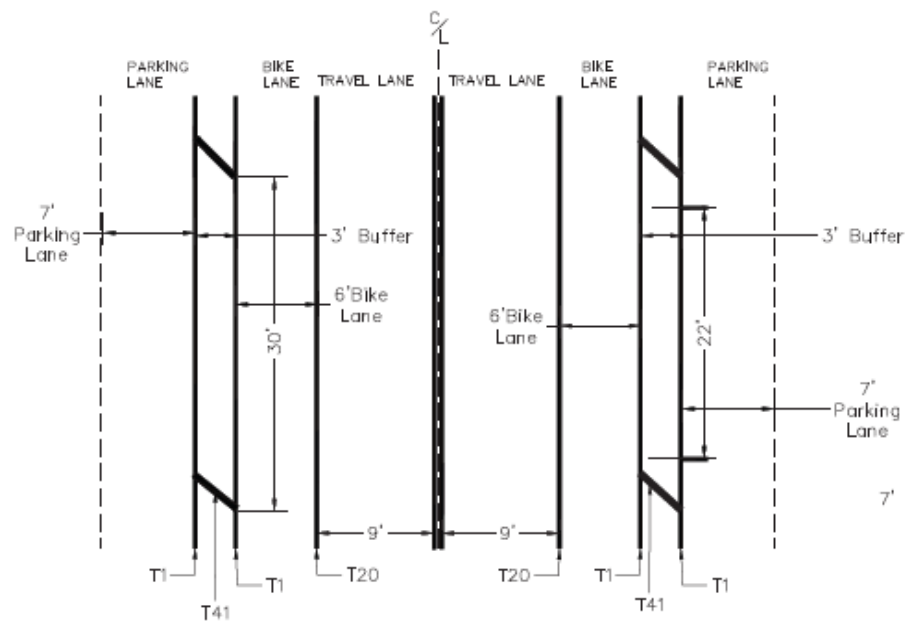
Once the concrete work is complete, the striping contractor will return to install the crosswalk at Mt. Vernon and complete the parallel parking space markings. CDOT’s current timeframe is to have this entire project completed by the end of the year!

Questions? Contact CharlotteDOT@charlottenc.gov or 704-336-4119 for more information.

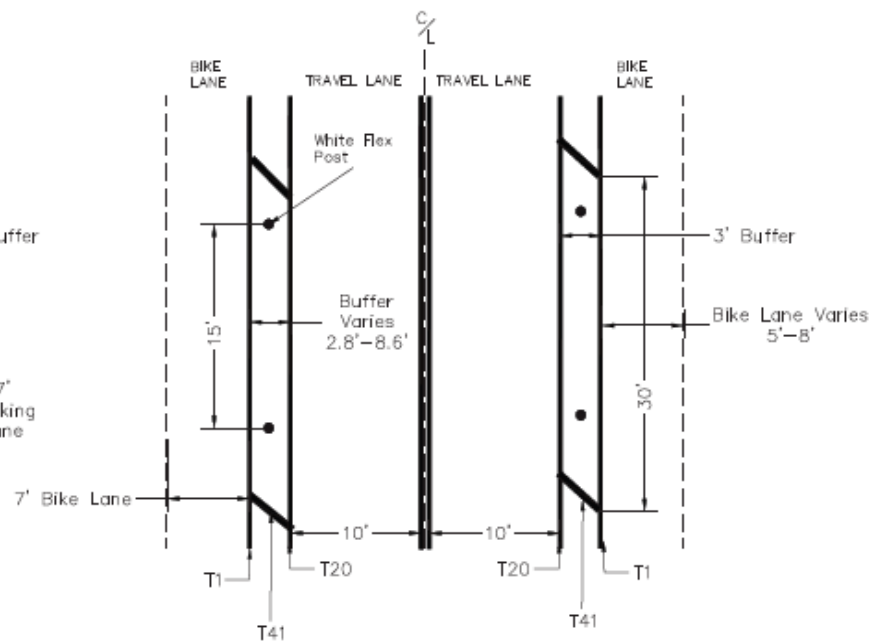


Traffic Calming Project area is Dilworth Rd. from Romany to E. Morehead. The results will be 7' parking lanes, 3' buffers, 6' bike lanes and a 9' travel lanes.

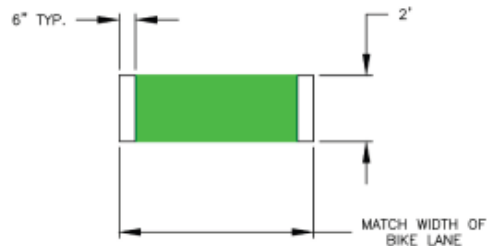




TYPICAL SECTION 1
STA 18+00 - STA 34+00
NTS



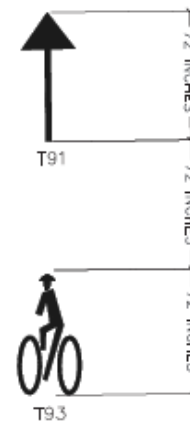
TYPICAL SECTION 2
STA 12+60 - STA 17+50
NTS



PAVEMENT MARKING SCHEDULE

- T1 - WHITE EDGELINE (4", 90 MIL)
- T4 - 3 FT - 9 FT./SP WHITE MINISKIP (4", 90 MIL)
- T20 - WHITE EDGELINE (6", 90 MIL)
- T24 - 2 FT. - 6 FT./SP WHITE MINISKIP (6", 90 MIL)
- T41 - WHITE DIAGONAL (8", 90 MIL)
- T46 - WHITE CROSSWALK LINE (8", 90 MIL)
- T61 - WHITE STOPBAR (24", 90 MIL)
- T91* - BICYCLE STRAIGHT ARROW, HEATED-IN-PLACE (90 MIL)
- T93* - BICYCLE CHARACTER, HEATED-IN-PLACE (120 MIL)
- T94 - SHARROW, HEATED-IN-PLACE (90 MIL)

*SEE DETAIL, THIS SHEET



T94

SIGN LEGEND



R3-17
30X24



R2-1-25
24" x 30"



R3-17A
30X12



R3-17B
30X12



W16-7P
30X24



S1-1
36" x 36"



R7-8
12X18



NO PARKING ANYTIME
OTHER SIDE OF SIGN
12X18

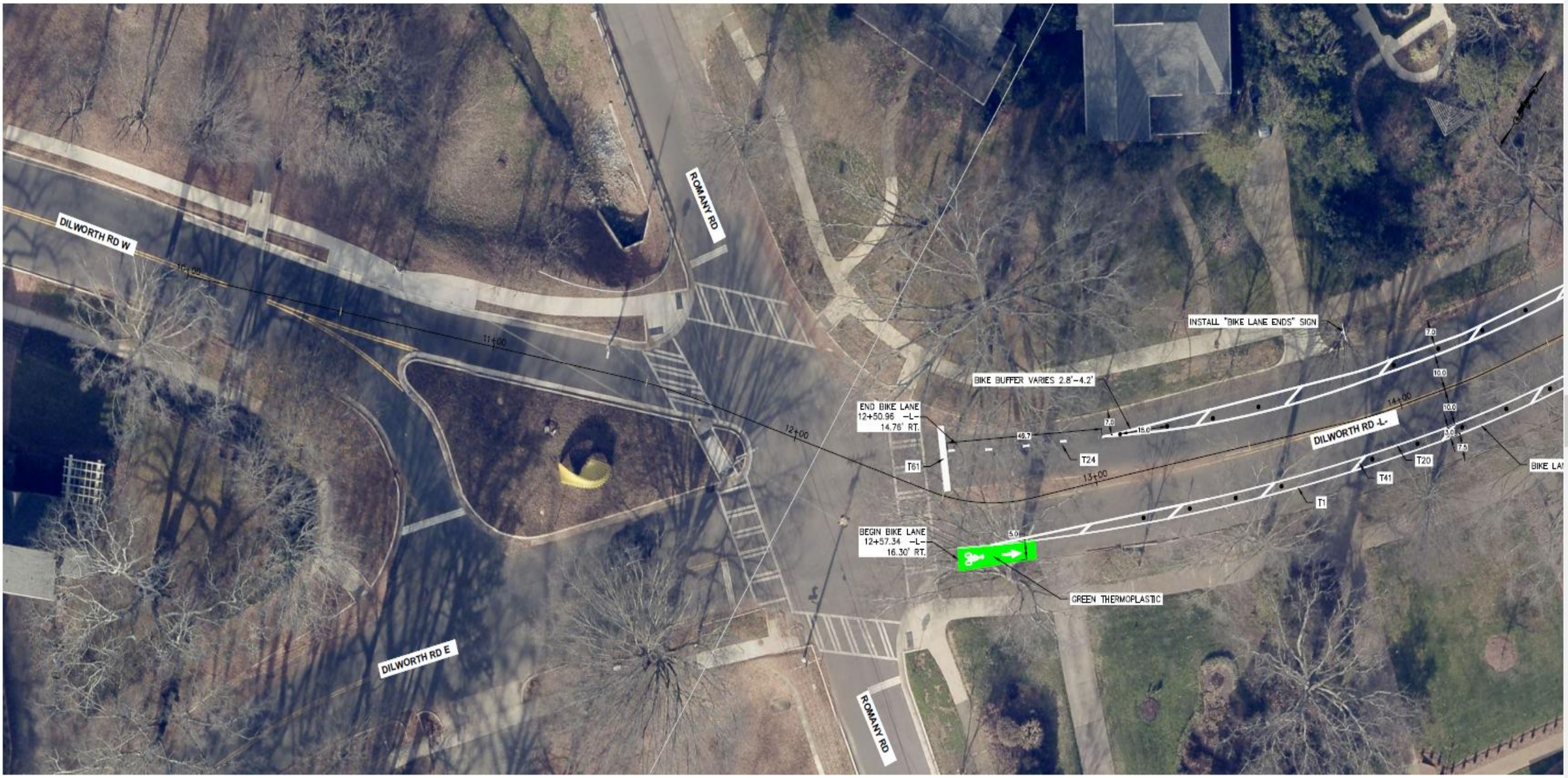


NO PARKING ANYTIME
THIS SIDE OF SIGN
12X18



W16-9P
30X24

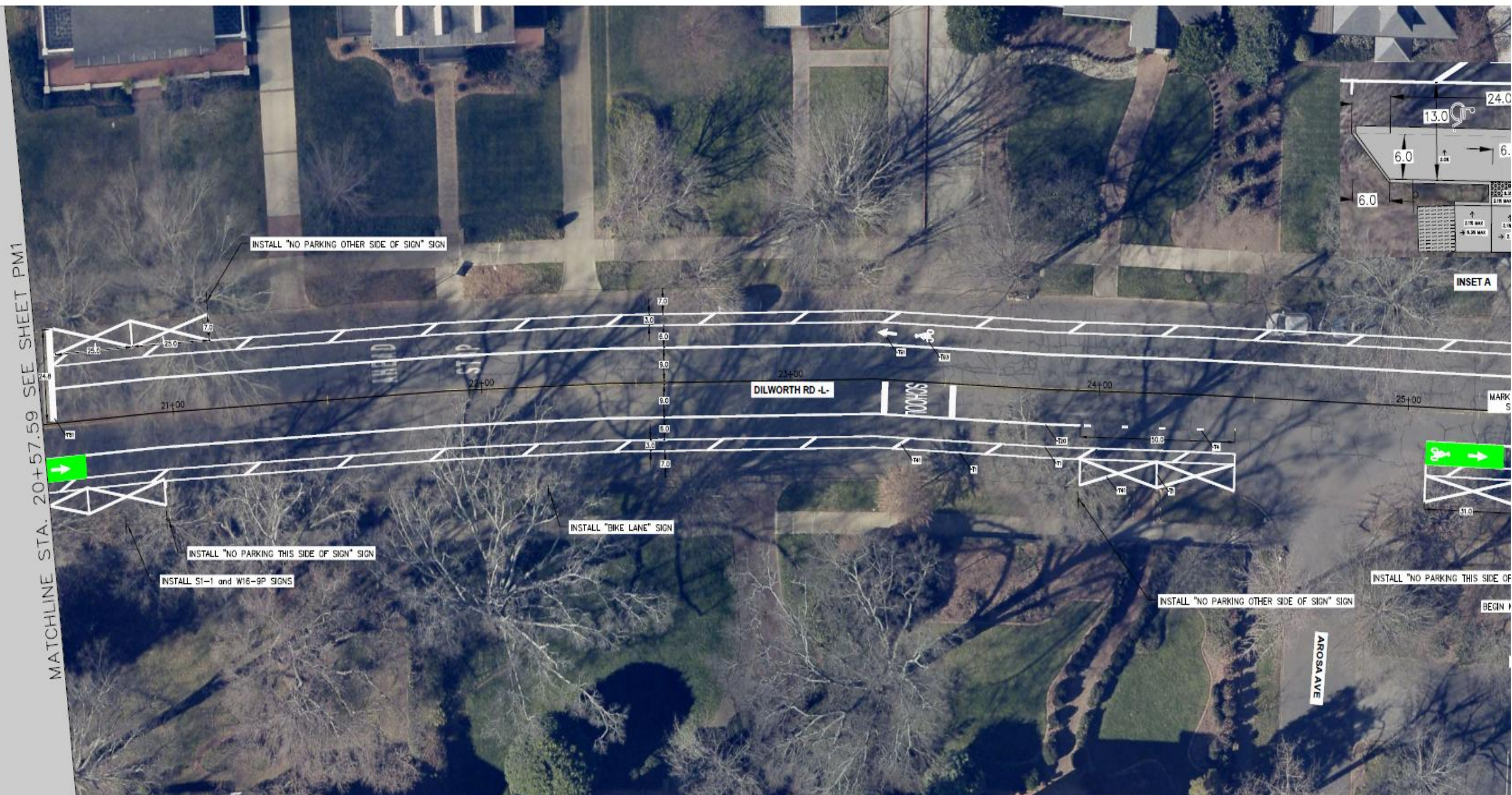
Dilworth Rd. and Romany Rd intersection



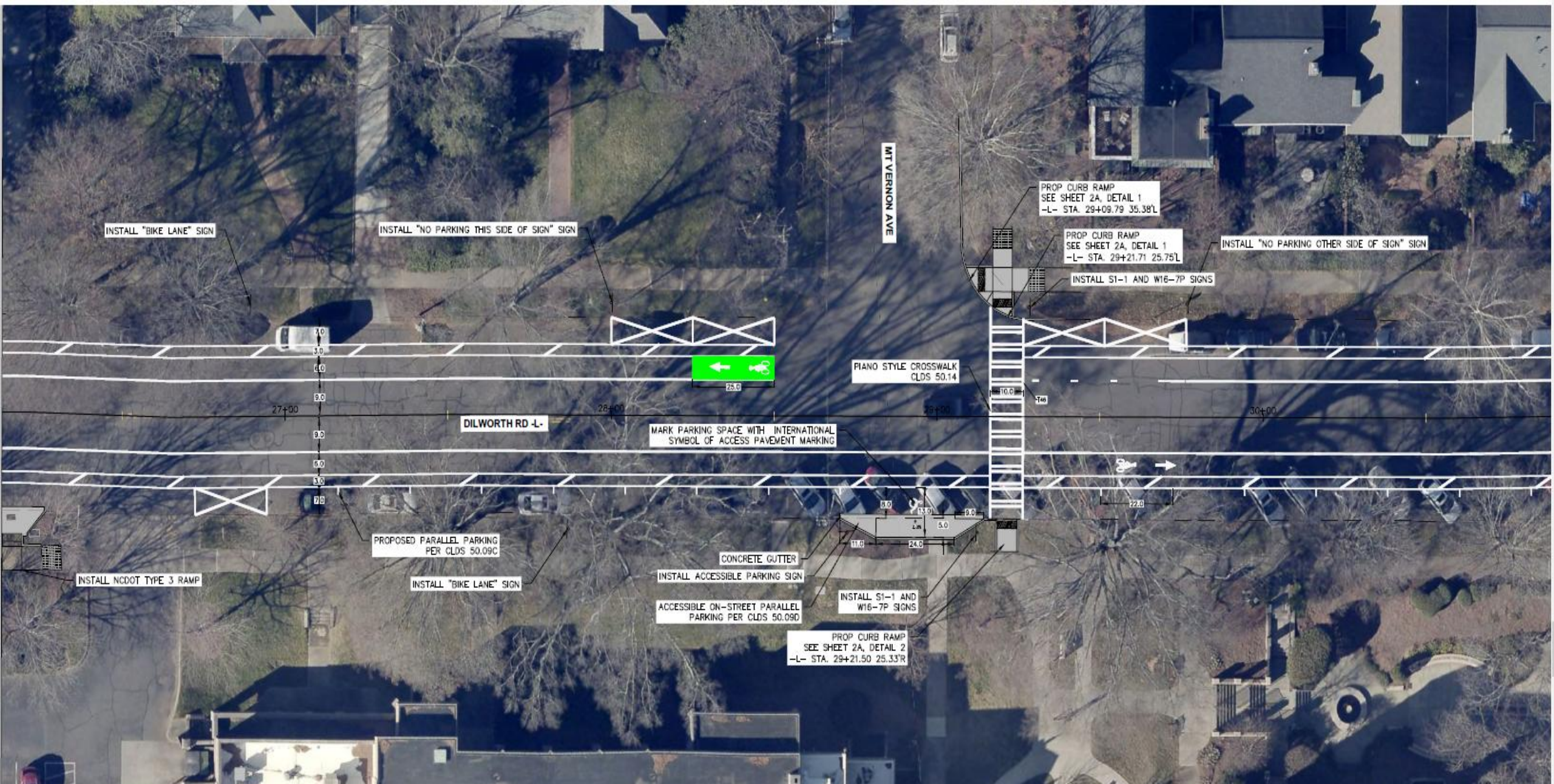
Dilworth Rd. and Linganore intersection



Dilworth Rd. and Arosa Ave intersection



Dilworth Rd. and Mt. Vernon intersection



Dilworth Rd. at Morehead St.

